


**FOR MORE INFORMATION VISIT:  
WWW.TKA-METALL.DE/SWING-GATE-SYSTEMS**

**OR SCAN THIS QR-CODE:**



**Tillmann & Köckmann  
GmbH & Co. KG**  
Specksloh 6  
59757 Arnsberg  
Germany  
Tel.: +49 29 32 / 89 48 6 - 10  
Fax: +49 29 32 / 89 48 6 - 29  
E-Mail: [info@tka-metall.de](mailto:info@tka-metall.de)  
Internet: [www.tka-metall.de](http://www.tka-metall.de)

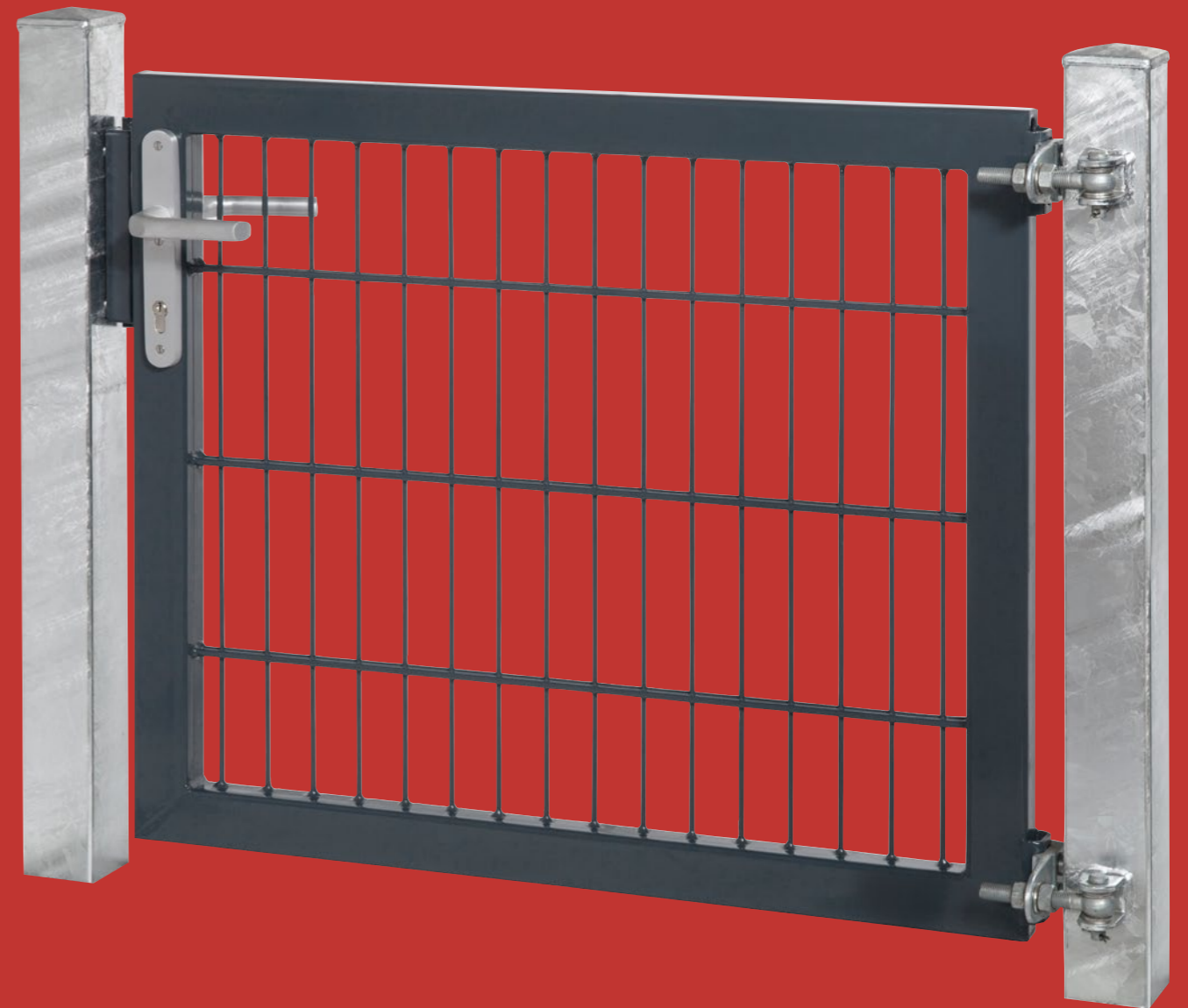


 Visit us on Facebook  
[www.facebook.com/tundka](http://www.facebook.com/tundka)

\* Examples for QR-Code-Readers:  
i-nigma Reader for Blackberry, iPhone, Nokia, HTC  
scan for iPhone  
Barcode Scanner for Android

# R/L SWING GATE

1+2 WINGS WITH SEVERAL INFILLS



# R/L SWING GATE



FRAME	Rectangular steel tubes 60/40 mm
POSTS	Square steel tube 80/80/2 - 120/120/3 mm (always 750 mm longer as gate height)
INFILL	Double bar panel 8/6/8, tubes 30/20/1.5 mm, wave grid 50/50/5 mm (please indicate when ordering)
FENCE CONNECTION	Without, as an extra a fence connection strip with self-tapping screws can be ordered
HINGES	M16 up to M20 - threadable
LOCKING SYSTEM	Secure lock system prepared for profile cylinder, long aluminum back plate and set of handles
SLAM PLATE	Screwed
OPENING DIRECTION	Universal applicable (inside/outside + right/left), opening angle 180°
HEIGHTS	600-2400 mm
WIDTHS	1 wing: 1000/1250/1500/2000 mm, 2 wings: 2000/2500/3000/3500/4000/4500/5000 mm
CORROSION PROTECTION	By means of hot dipped galvanizing according to DIN EN ISO 1461 or additionally RAL color powder coating according to DIN 55633

The gate width is equal to the distance between the two gate posts - free passage.

1 wing gates (gate width 1000 mm) and double wing gates (gate width 3000 mm or 4000 mm) are available from stock - in hot dipped galvanized or RAL 6005 and RAL 7016. Other colors are always make to order/lead time.

Over climbing protection/dental strip on top of wing available on request. For gates from stock only screw on type is available.

To fix directly to the ground we offer a base plate solution.

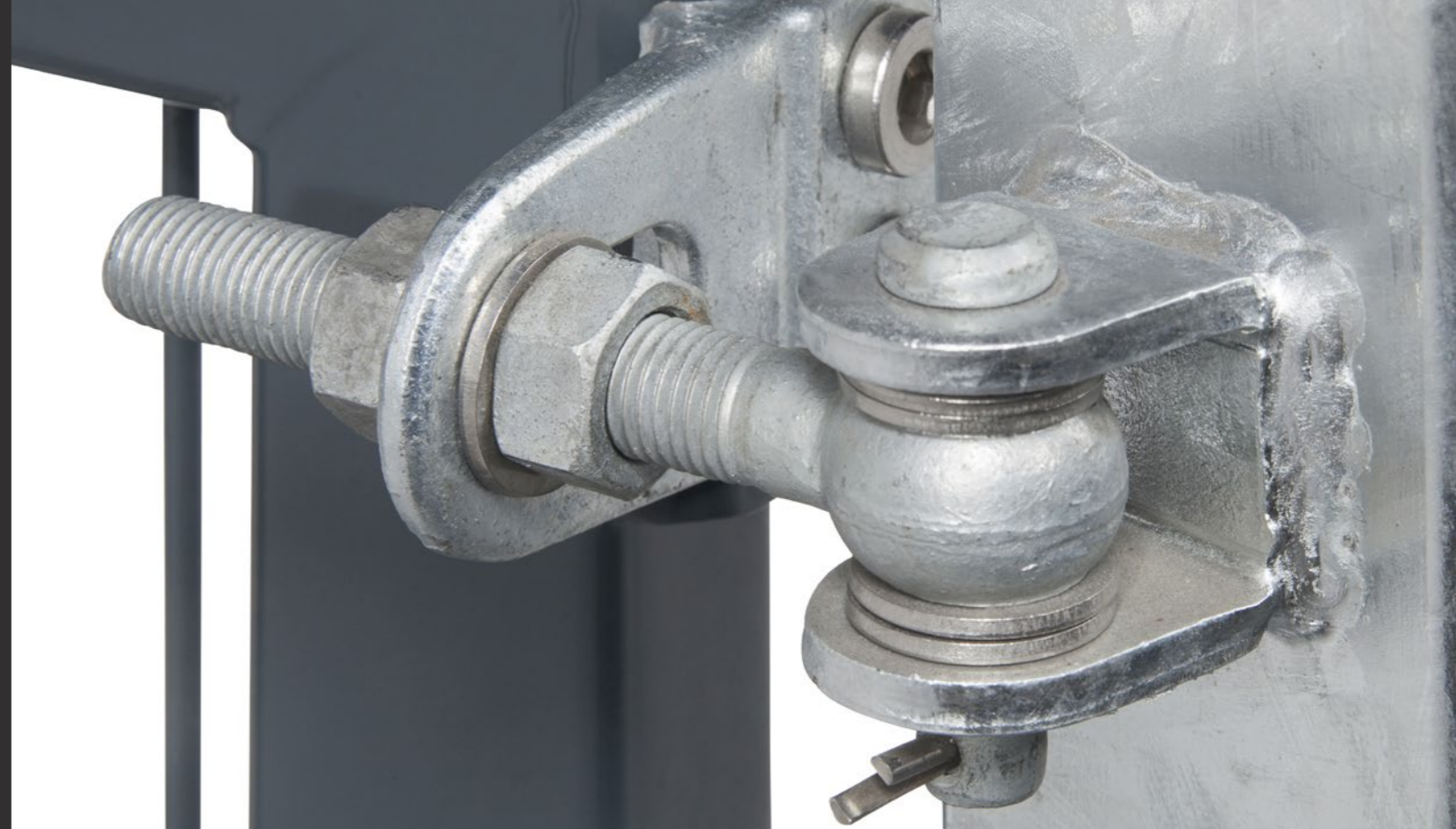
**OUR PRODUCTS ARE AVAILABLE IN HOT DIPPED GALVANIZED OR POWDER COATED IN STANDARD COLORS GREEN RAL 6005, ANTHRACITE RAL 7016. OTHER RAL COLORS ON REQUEST.**

Notes:  
**All post profiles and foundation dimensions T&K.A. recommends comply with general structural requirements. They are not a substitute for the site-specific structural analysis as specified by construction supervision. This is to be provided by the customer.**

All goods declared by us as hot dipped galvanized are hot dipped galvanized according to DIN EN ISO 1461. This procedure protects all metal components against corrosion. The formation of white rust cannot basically be prevented. It is a powdery, water-soluble product of zinc corrosion formed from zinc hydroxide and zinc oxide. This is not a quality defect and with the formation of the zinc patina layer, this occurrence disappears completely. Minor surface irregularities and zinc discharge points are production-determined features and are evidence of hot dipped galvanizing (source: Zinkberatung e.V., [the German zinc consultative body] Düsseldorf).

Technical details are subject to change. Custom-made products, other RAL colors and dimensions on request.

By using our modern tube laser system, we can offer you exceptional solutions for any demand you may have. Please contact us!



Flat bar panel  
 Mesh size 50/200 mm  
 Please specify the opening direction in your order



Rectangular tubes  
 30/20 mm



Wave grid  
 50/50/5 mm

