

POST SYSTEMS



Our standard posts are made from 60/40/2 mm rectangular tubes. Of course we offer different post sections on request as well.

By using our modern tube laser system, we can offer exceptional solutions for any demand you may have. Various drilling patterns on the profiles can be produced fast, efficient and down to hundredths of millimeters.

Special solutions as welded on base plates and bend arms can be produced on order base. Our tube laser system combined with our specialist welding workshop is the core expertise in custom solutions.

A high quality durable surface treatment also protects against corrosion.

OUR BASE PLATES

FENCE HEIGHT	SIZE OF BASE PLATE
630-1030 mm	100/100/5 mm
1230-1830 mm	120/120/6 mm
2030-2430 mm	150/150/10 mm

Special base plates in L- or U-shape as well as special sizes are available on request.

OUR PRODUCTS ARE AVAILABLE IN A HOT DIPPED GALVANIZED VERSION OR POWDER-COATED IN THE STANDARD COLOURS GREEN RAL 6005 AND ANTHRACITE RAL 7016. OTHER RAL COLOURS ON REQUEST.

Notes:
All post profiles and foundation dimensions T&K.A. recommends comply with general structural requirements. They are not a substitute for the site-specific structural analysis as specified by construction supervision. This is to be provided by the customer.

All goods declared by us as hot dipped galvanized are hot dipped galvanized according to DIN EN ISO 1461. This procedure protects all metal components against corrosion. The formation of white rust cannot basically be prevented. It is a powdery, water-soluble product of zinc corrosion formed from zinc hydroxide and zinc oxide. This is not a quality defect and with the formation of the zinc patina layer, this occurrence disappears completely. Minor surface irregularities and zinc discharge points are production-determined features and are evidence of hot dipped galvanizing (source: Zinkberatung e.V., [the German zinc consultative body] Düsseldorf).

Technical details are subject to change. Custom-made products, other RAL colors and dimensions on request.

By using our modern tube laser system, we can offer you exceptional solutions for any demand you may have. Please contact us!



Tillmann & Köckmann GmbH & Co. KG

POST SYSTEMS

FOR MORE INFORMATION VISIT: WWW.TKA-METALL.DE/POST-SYSTEMS

OR SCAN THIS QR-CODE:



Tillmann & Köckmann
GmbH & Co. KG

Specklosh 6
59757 Arnsberg
Germany

Tel.: +49 29 32 / 89 48 6 - 10
Fax: +49 29 32 / 89 48 6 - 29
E-Mail: info@tka-metall.de
Internet: www.tka-metall.de



Visit us on Facebook

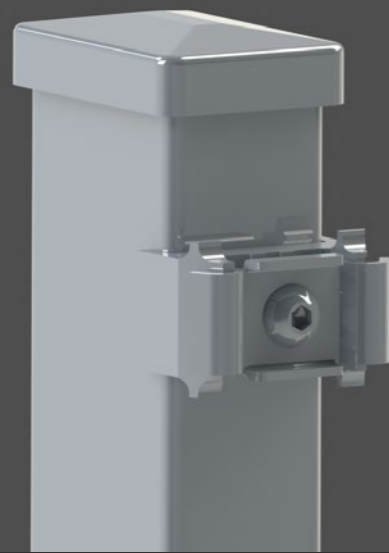
www.facebook.com/tundka

* Examples for QR-Code-Readers:

i-nigma Reader for Blackberry, iPhone, Nokia, HTC
scan for iPhone
Barcode Scanner for Android



POST SYSTEMS



POST TYPE S

POST WITH FLAT IRON FIXATION
(200 MM DRILLING PATTERN – BOTTOM DRILLING AT 160 MM)
FITTED WITH PVC FIXING SUPPORT AT EACH RIVET

Applicable to double bar, flat bar and decorative fence panels

Rectangular steel tube profile 60/40 mm. The PVC fixing support is fitted by means of a threaded sleeve to the post. For security on top of each post you can find an aluminum cap with overlap and anti-theft device.

Accessories: aluminium cap with overlap and anti-theft device, flat iron 40/5 mm, M8x40 stainless steel hexagon socket screw (Allen screw)

TOTAL POST LENGTH mm	PANEL HEIGHT mm	NUMBER OF FIXING SUPPORTS
1200	630	4
1400	830	5
1600	1030	6
1800	1230	7
2000	1430	8
2200	1630	9
2400	1830	10
2600	2030	11
2800	2230	12
3000	2430	13

POST TYPE O

POST WITH STAINLESS STEEL FIXING CLAMPS
(OPTIONALLY WITH STAINLESS STEEL FIXING PLATES)
WITH PVC FIXING SUPPORT AT EACH RIVET

Applicable to double bar panels and decorative fencing panels

Rectangular steel tube profile 60/40 mm. The PVC fixing support is mounted by means of a threaded sleeve to the post. On top of each post you can find an overlapping PVC cap.

Accessories: overlapping PVC cap, stainless steel fixing clamps (stainless steel fixing plate on request), M8x40 stainless steel hexagon socket screw (Allen screw)

TOTAL POST LENGTH mm	PANEL HEIGHT mm	NUMBER OF FIXING SUPPORTS
1200	630	3
1400	830	3
1600	1030	3
1800	1230	4
2000	1430	4
2200	1630	4
2400	1830	4
2600	2030	5
2800	2230	5
3000	2430	5

POST TYPE U

UNDRILLED POST

Applicable to double bar panels and decorative fencing panels

Rectangular steel tube profile 60/40 mm. On top of each post you can find an overlapping PVC cap. Please order needed quantity of brackets or U-bolts separately.

Accessories: overlapping PVC cap

TOTAL POST LENGTH mm	PANEL HEIGHT mm	RECOMMENDED NUMBER OF BRACKETS OR U-BOLTS
1200	630	2
1400	830	2
1600	1030	2
1800	1230	3
2000	1430	3
2200	1630	3
2400	1830	3
2600	2030	3
2800	2230	4
3000	2430	4

POST TYPE H

POST DRILLED FOR INSTALLATION WITH HOOK SCREWS

Applicable to flat bar panels and 3D panels

Rectangular steel tube profile 60/40 mm. On top of each post you can find an overlapping PVC cap. Please order needed quantity of hook screws and security nuts separately. Hook screws have a different shape for flat bar panels and 3D panels.

Accessories: overlapping PVC cap

TOTAL LENGTH mm	FLAT BAR PANEL PANEL HEIGHT	HOOK SCREWS* CONNECTORS	3D PANELS PANEL HEIGHT	HOOK SCREWS*	
1200	630 mm	2	4	630 mm	2
1400	830 mm	3	5	-	-
1600	1030 mm	3	6	1030 mm	3
1800	1230 mm	3	7	1230 mm	3
2000	1430 mm	4	8	1530 mm	4
2200	1630 mm	4	9	-	-
2400	1830 mm	4	10	1730 mm	4
2600	2030 mm	5	11	2030 mm	5
2800	2230 mm	5	12	-	-
3000	2430 mm	6	13	2430 mm	6

* Flat bar panels: Hook screws M8x90 mm, 3D Panels: Hook screws M8x80 mm

POST TYPE P

POST WITH PROFILE BAR
(200 MM DRILLING PATTERN – BOTTOM DRILLING AT 160 MM)
FITTED WITH PVC FIXING SUPPORT AT EACH RIVET

Applicable to double bar, flat bar and decorative fence panels

Rectangular steel tube profile 60/40 mm. The PVC fixing support is fitted by means of a threaded sleeve to the post. For security on top of each post you can find an aluminum cap with overlap and anti-theft device.

Accessories: aluminium cap with overlap and anti-theft device, profile bar 40/7 mm, M8x40 stainless steel hexagon socket screw (Allen screw)

TOTAL POST LENGTH mm	PANEL HEIGHT mm	NUMBER OF FIXING SUPPORTS
1200	630	4
1400	830	5
1600	1030	6
1800	1230	7
2000	1430	8
2200	1630	9
2400	1830	10
2600	2030	11
2800	2230	12
3000	2430	13

POST TYPE D

POST WITH A U-PROFILE METAL COVER STRIP (LEFT) OR WITH A METAL CLAMP (RIGHT)

Applicable to double and flat bar panels

Rectangular steel tube profile 60/40 mm. On top of each post you can find an overlapping PVC cap. A threaded sleeve attaches the metal aid to the post.

Accessories: overlapping PVC cap, U-Profile cover strip or metal clamp, M8x60 stainless steel hexagon socket screw (Allen screw)

TOTAL LENGTH mm	TOTAL POST LENGTH mm	NUMBER OF FIXING SUPPORTS/SCREWS/CLAMPS
630	1200	3
830	1400	3
1030	1600	4
1230	1800	4
1430	2000	4
1630	2200	5
1830	2400	5
2030	2600	5
2230	2800	6
2430	3000	6